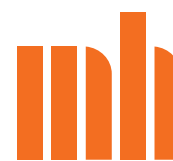


Stadt:
Adresse:

München
Muffathalle
Zellstr. 4, 81667 München
www.muffatwerk.de



Venue Info Muffathalle 2012

Büroadresse: Muffathalle Betriebs GmbH
Zellstr. 4, 81667 München

Büro Telefonnummer + 49 (0) 89 45 87 50 00
Büro Faxnummer + 49 (0) 89 45 87 50 50
Email info@muffatwerk.de

Grundfläche 622 m²
Länge 38,4 m
Breite 16 m
Höhe 11m

Standard Bühnengröße

Breite	12 m	
Tiefe	7 m	
Höhe	1,25 m	
lichte Höhe	4,75 m	
Strom Licht	1 x 125 A	CEE
Strom Ton	1 x 63 A	CEE
Produktionsbüro	2	
Künstlergarderobe	1	10 m ²
Künstlergarderobe	2	8 m ²
Künstlergarderobe	3	7 m ²
Künstlergarderobe	4	11 m ²
Duschen Männer/Frauen	3	
Toiletten	3	
Catering Raum	ja	
Kochen mit Gas	nein	
Rigging	möglich	
Ladeweg	40 m	
Stufen	nein	
Parkplätze	auf Anfrage	
Busstrom	2x 16 A Schuko	
	2x 16 A CEE	
	2x 32 A CEE	
Zahlenkombination Busstrom	321	
Merchandise Gebühr	100 €	
Telefonnumer Produktionsbüro	00 49 (0) 89 45 87 50 98	isdn (RJ 45)
	00 49 (0) 89 45 87 50 97	analoge (RJ 45)
W-Lan	ja	
Öffentliche Garderobe	1	
Max. Bodenbelastung	900 kg / m ²	



Backline Muffathalle 2012

Bass

1 x GALLIEN & Krüger 800 RB Amp
2 x Hartke 4 x 10" Speaker

Drums:

Premier Birch Cenista

22" x 16" Bassdrum

skin: Remo Powerstroke 3

Resonance: 1 layer with hole

8" x 8", 10" x 9", 12" x 10", 14" x 12"

skin: Remo Emperor clear

resonance: 1 layer Premier

16" x 16"

skin: Remo Pin Stripe clear

resonance: 1 layer Premier

14" x 5" steel snare

14" x 7" wooden snare

skin: Remo Ambassador coated

resonance: Remo Ambassador snare

Hardware:

3 x cymbalstand with boom

1 x cymbalstand staight

1 x snarestand Pearl

1 x footmachine

1 x highhat stand

1 x drumthrone

Cymbals:

20" heavy bell ride, Paiste signature line

13" hihat, Zildjian k-series

16" dark crash thin, Zildjian k-series

10" splash AA, Sabian

2 toms to be mounted on cymbal stands!



Ton Muffathalle 2012

Front P.A.

D&B Audio Q1 Line Array
5x Q1 Top
1x Q7 Infill
6x Q Sub
3x D12 Amp, 1x E-pac
pro Seite

F.O.H:

Digidesign Venue D-Show Profile 48 / 8

Monitoring:

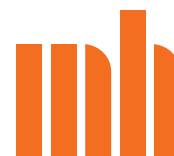
Yamaha M7CL48
11 x d&b M4
5 x d&b D6 Verstärker

Mikrofone:

4 x Sennheiser 604
5 x Shure SM58
3 x Shure SM 58 A Beta
7 x Shure SM57
1 x Shure Beta 57A
1 x Shure Beta 91
1 x Shure Beta 56A
1 x Shure Beta 52
2 x AKG 391
4 x AT 4041
1 x MD 88

Stands:

3 x Claws
15 x big boom
8 x small boom
15 x DI-Boxes (4 aktiv / 12 passiv / 3 stereo)
3 x Trennübertrager



Licht Muffathalle 2012

10	zoom profile	Niethammer Enizoom 115	1200 Watt
22	zoom profile	ETC Source 4 25°/50°	
8	zoom profile	Strand 23° /50°	600 Watt
14	zoom profile	Niethammer HPZ 215	2000 Watt
14	prism-convex	Strand Lighting Alto PC	2000 Watt
14	prism-convex	Strand Lighting Cantata PC	1200 Watt
4	fresnal alto		2000 Watt
6	fresnel	Strand Lighting Pollux	5000 Watt
8	fresnel	Strand Lighting Castor MK II	2000 Watt
12	parblazer / floorspot black	PAR 64 CP 60/61/62	1000 Watt
10	parblazer / floorspot silver	PAR 64 CP 60/61/62	500 Watt
6	6 Bars	PAR 64 CP 60/61/62	1000 Watt
24	single pars 64		1000 Watt
2	ACL Sets		
4	asymetric Fluters	Coda with barndoors	1000 Watt
2	8 lights	Stairville Blinder	2000 Watt
1	follow spot	Niethammer MZU 106 HMI	1200 Watt
1	hazer	Look Unique	
auf Anfrage verfügbar:		6 x Clay Paky Alpha Spot HPE 700 4 x JBLED A7 Zoom, RGB 2 x Martin Mac 600	

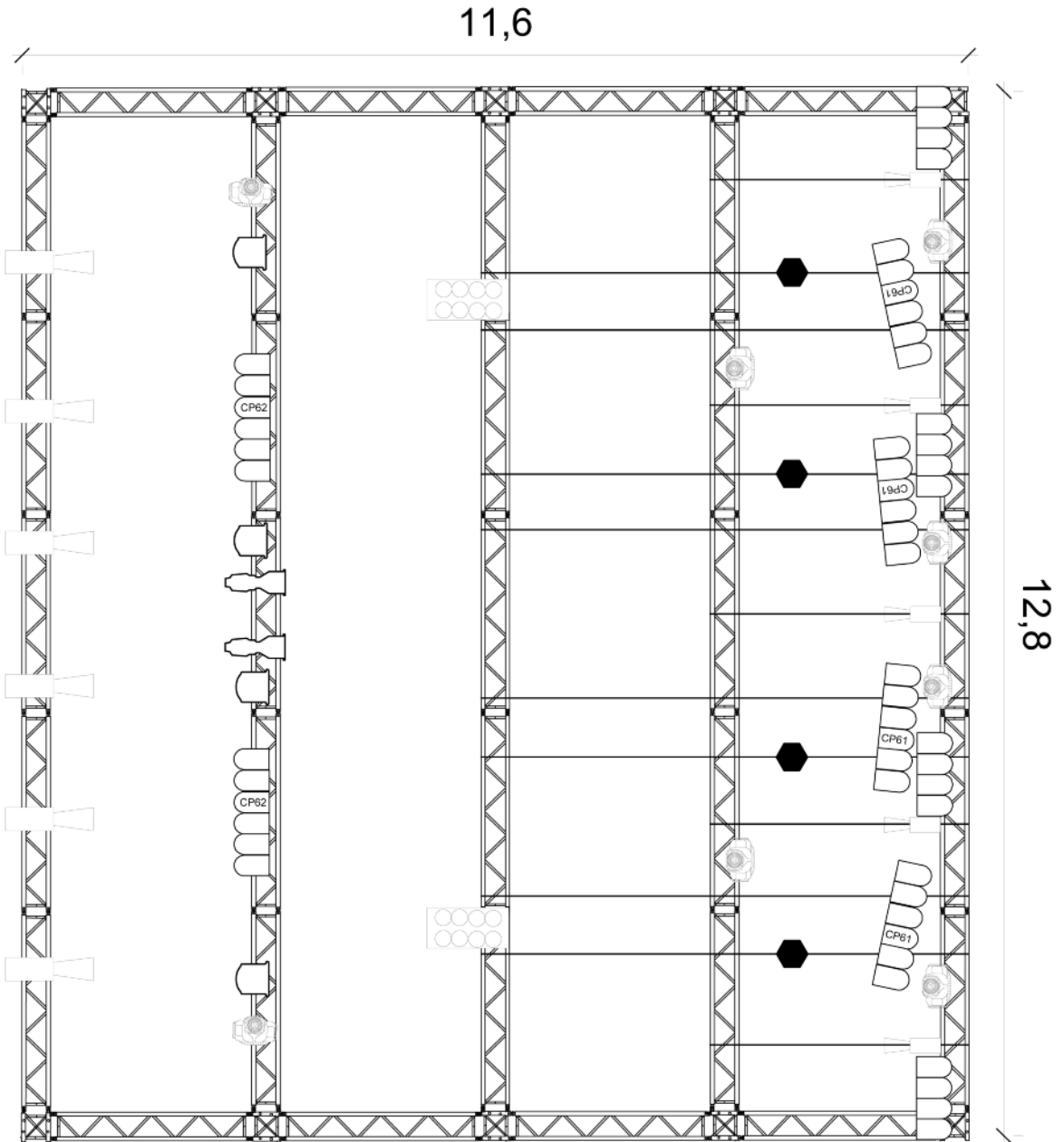
Lighting desk:










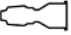
Grand MA Full size

Dimmer:Interface DMX 512
96 x 2,5 kW channel
30 x 5 kW channel**Rigging:**Slick Ground Support
36 x 2,4 m
4 x 1,2 m
4 x 90° Corner
4 x 3-way Corner**Rigging points:**9 motors 1 t each (3 motors each catwalk/bridge)
max height 7 meters over ground**Video-Equipment:**

1	ProjectionDesign F3 XGA Beamer mit EN13 1,3-1,7:1 Objektiv	5000 Ansi	
1	Projection Design F 82 HD Beamer	10.000 Ansi	
1	Stumpfl	Screen	6 m x 4,5 m
1	Stumpfl	Screen	4 m x 3 m
1	Stumpfl	Screen	2,10 m x 1,6 m
1	Operascreen		14m x 7m

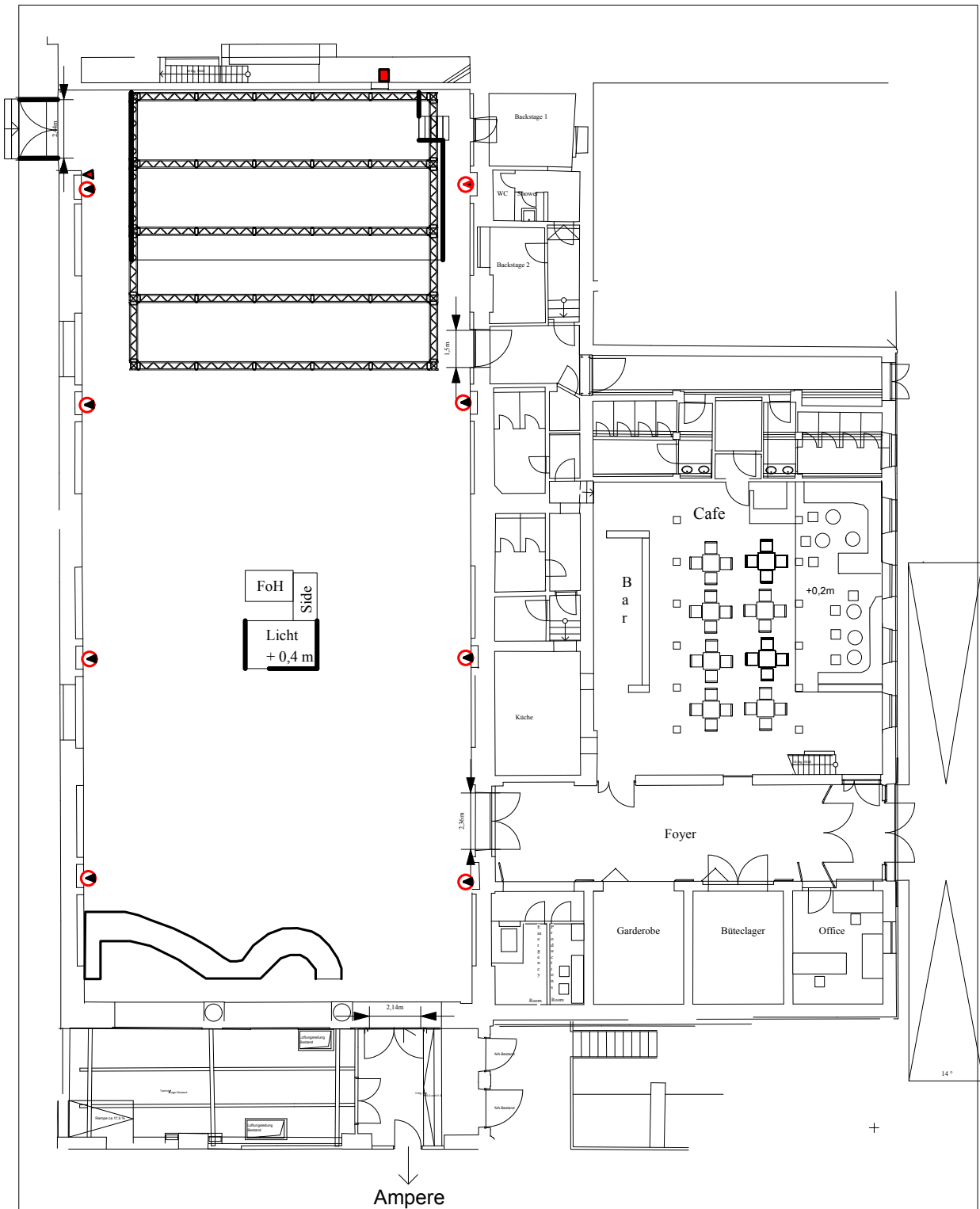
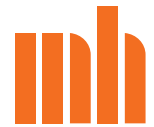
Licht Muffathalle 2012



	Clay Paky Alpha Spot 700 HPE
	JB Lighting A7
	Par 64
	ACL
	ETC Source Four
	8 Light
	PC 2 KW
	Mac 600 Wash
	2KW Profile
	1KW Profile

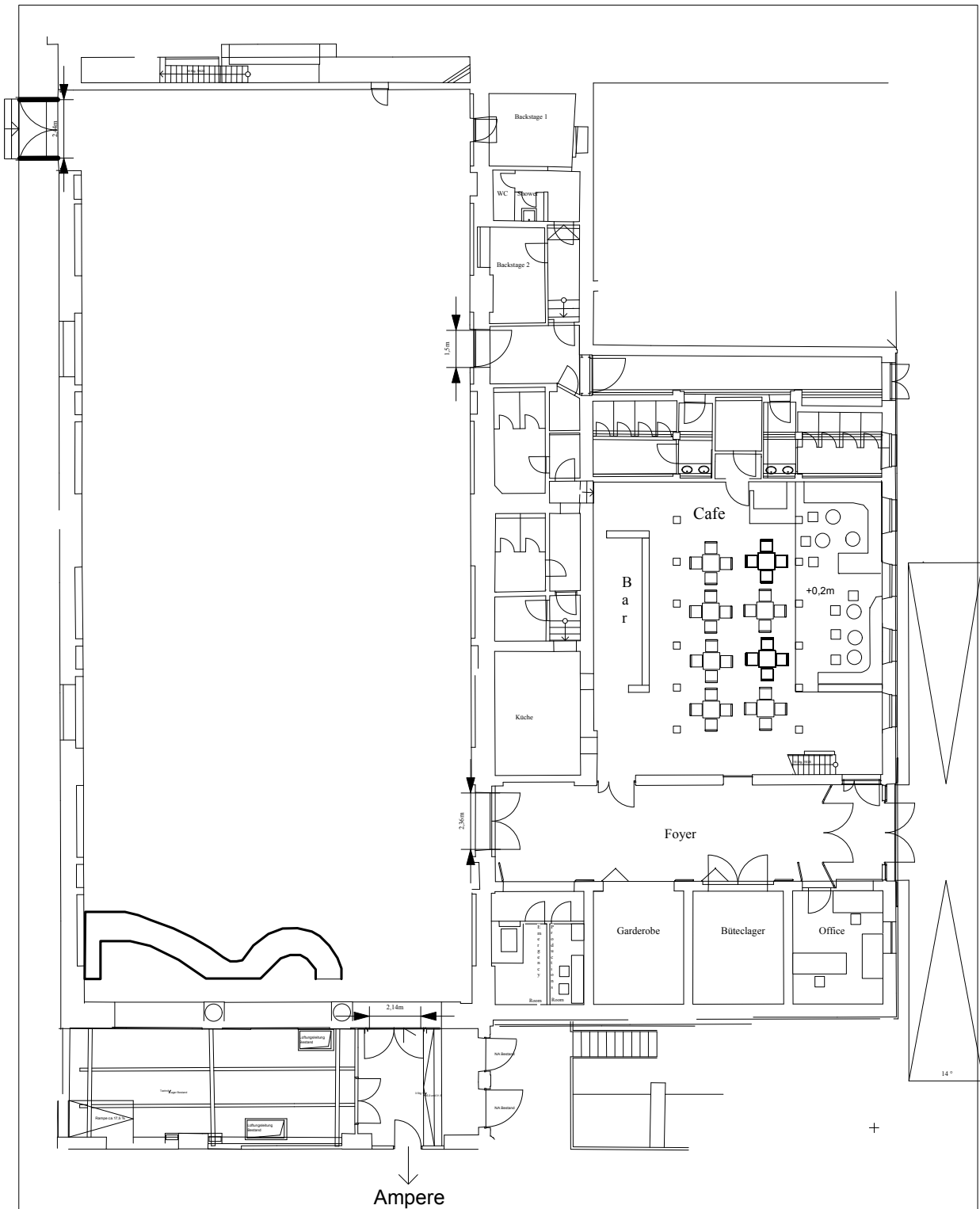
Console : Grand MA full size

Bühne FOH Muffathalle



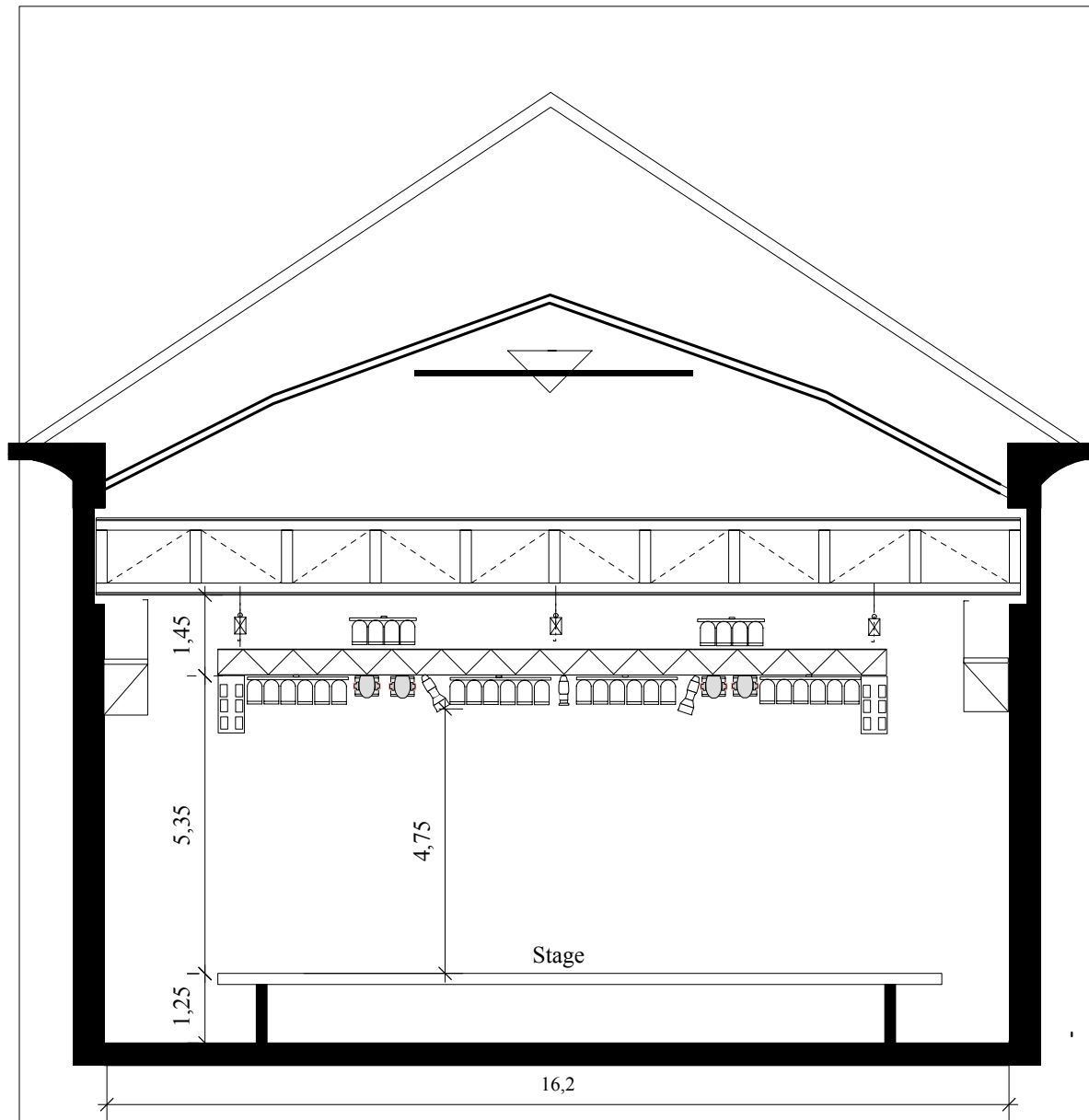
Muffathalle Munich Zellstr.4 D-81667 München www.muffatwerk.de	Produktion:	■ 3 x 63 A CEE ● 3 x 32 A CEE ▲ 3 x 125 A CEE DMX im Mauerversatz
	Date:	scale 1:200

Leerplan Muffathalle



Muffathalle Munich Zellstr.4 D-81667 München www.muffatwerk.de	Produktion:	
		DMX im Mauerversatz
	Date:	scale 1:200

Querschnitt Muffathalle



Town Address Munich MUFFATHALLE Zellstr.4 81667 Munich www.muffatwerk.de	Stage: 7 x 13 x 1,25	Profile
	Clearance: 5,35	Scale 1:100
		Date: