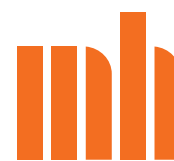


Town
Address

Munich
MUFFATHALLE
Zellstr.4
81667 Munich
www.muffatwerk.de



Venue Info Muffathalle 2011

Office Address

Muffathalle Betriebs GmbH

Office Phone Number

Zellstr. 4

81667 Munich

00 49 (0) 89 45 87 50 00

Office Fax Number

00 49 (0) 89 45 87 50 50

Email

info@muffatwerk.de

| | | | |
|----------------------------|----------------------------|------------------|--|
| Floorspace | 622 | m ² | |
| Length | 38,4 | m | |
| Width | 16 | m | |
| Clearance | 11 | m | |
| Stage size standard | | | |
| Width | 12 | m | |
| Depth | 7 | m | |
| Height | 1,25 | m | |
| Clearance | 4,75 | m | |
| Power stage light | 1 x 125 A | CEE | |
| Power stage sound | 1 x 63 A | CEE | |
| Production Office | 2 | | |
| Artist wardrobe 1 | 10 | m ² | |
| Artist wardrobe 2 | 8 | m ² | |
| Artist wardrobe 3 | 7 | m ² | |
| Artist wardrobe 4 | 11 | m ² | |
| Shower male / female | 3 | | |
| Toilets | 3 | | |
| Catering room | yes | | |
| Cooking with gas | no | | |
| Rigging | possible | | |
| Loading | 40 | m | |
| Steps | no | | |
| Parking | on request | | |
| Bus power | 2x 16 A | Schuko | |
| | 2x 16 A | CEE | |
| | 2x 32 A | CEE | |
| Security code bus power | 321 | | |
| Merchandising fee | 100 € | | |
| Production office number 1 | 00 49 (0) 89 45 87 50 98 | isdn (RJ 45) | |
| Production office number 2 | 00 49 (0) 89 45 87 50 97 | analogue (RJ 45) | |
| W-LAN | yes | | |
| Public cloakroom | 1 | | |
| Floor maximum rated load | 900 kg / m ² | | |



Backline Muffathalle 2011

Bass

1 x GALLIEN & Krüger 800 RB Amp
2 x Hartke 4 x 10" Speaker

Drums:

Premier Birch Cenista

22" x 16" Bassdrum

skin: Remo Powerstroke 3
resonance: 1 layer with hole

8" x 8", 10" x 9", 12" x 10", 14" x 12"

skin: Remo Emperor clear
resonance: 1 layer Premier

16" x 16"

skin: Remo Pin Stripe clear
resonance: 1 layer Premier

14" x 5" steel snare

14" x 7" wooden snare

skin: Remo Ambassador coated
resonance: Remo Ambassador snare

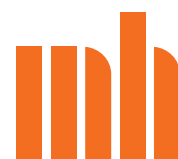
Hardware:

3 x cymbalstand with boom
1 x cymbalstand staight
1 x snarestand Pearl
1 x footmachine
1 x highhat stand
1 x drumthrone

Cymbals:

20" heavy bell ride, Paiste signature line
13" hihat, Zildjian k-series
16" dark crash thin, Zildjian k-series
10" splash AA, Sabian

2 toms to be mounted on cymbal stands!



Sound Muffathalle 2011

Front P.A.

D&B Audio Q1 Line Array
5x Q1 Top
1x Q7 Infill
6x Q Sub
3x D12 Amp, 1x E-pac
each side

F.O.H:

Digidesign Venue D-Show Profile 48 in / 8 out

Monitoring:

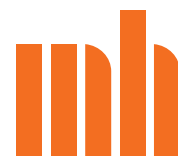
Yamaha M7CL48
11 x d&b M4
5 x d&b D6 amping (10 channels)

Microphones:

4 x Sennheiser 604
5 x Shure SM58
3 x Shure SM 58 A Beta
7 x Shure SM57
1 x Shure Beta 57A
1 x Shure Beta 91
1 x Shure Beta 56A
1 x Shure Beta 52
2 x AKG 391
4 x AT 4041
1 x MD 88

Stands:

3 x Claws
15 x big boom
8 x small boom
15 x DI-Boxes (4 aktiv / 12 passiv / 3 stereo)
3 x Trennübertrager



Lighting Muffathalle 2011

| | | | |
|----|------------------------------|------------------------------|-----------|
| 10 | zoom profile | Niethammer Enizoom 115 | 1200 Watt |
| 22 | zoom profile | ETC Source 4 25°/50° | |
| 6 | zoom profile | Strand 23° /50° | 600 Watt |
| 8 | zoom profile | Niethammer HPZ 215 | 2000 Watt |
| 14 | prism-convex | Strand Lighting Alto PC | 2000 Watt |
| 18 | prism-convex | Strand Lighting Cantata PC | 1200 Watt |
| 4 | fresnal alto | | 2000 Watt |
| 6 | fresnel | Strand Lighting Pollux | 5000 Watt |
| 8 | fresnel | Strand Lighting Castor MK II | 2000 Watt |
| 12 | parblazer / floorspot black | PAR 64 CP 60/61/62 | 1000 Watt |
| 10 | parblazer / floorspot silver | PAR 64 CP 60/61/62 | 500 Watt |
| 6 | 6 Bars | PAR 64 CP 60/61/62 | 1000 Watt |
| 21 | single pars 64 | | 1000 Watt |
| 2 | ACL Sets | | |
| 4 | asymetric Fluters | Coda with barndoors | 1000 Watt |
| 2 | 8 lights | Stairville Blinder | 2000 Watt |
| 1 | follow spot | Niethammer MZU 106 HMI | 1200 Watt |

1 hazer Look Unique

available on request:
4 x Martin Mac 500
2 x Martin Mac 600

Lighting desk: Grand MA Full size

Dimmer:
Interface DMX 512
96 x 2,5 kW channel
30 x 5 kW channel

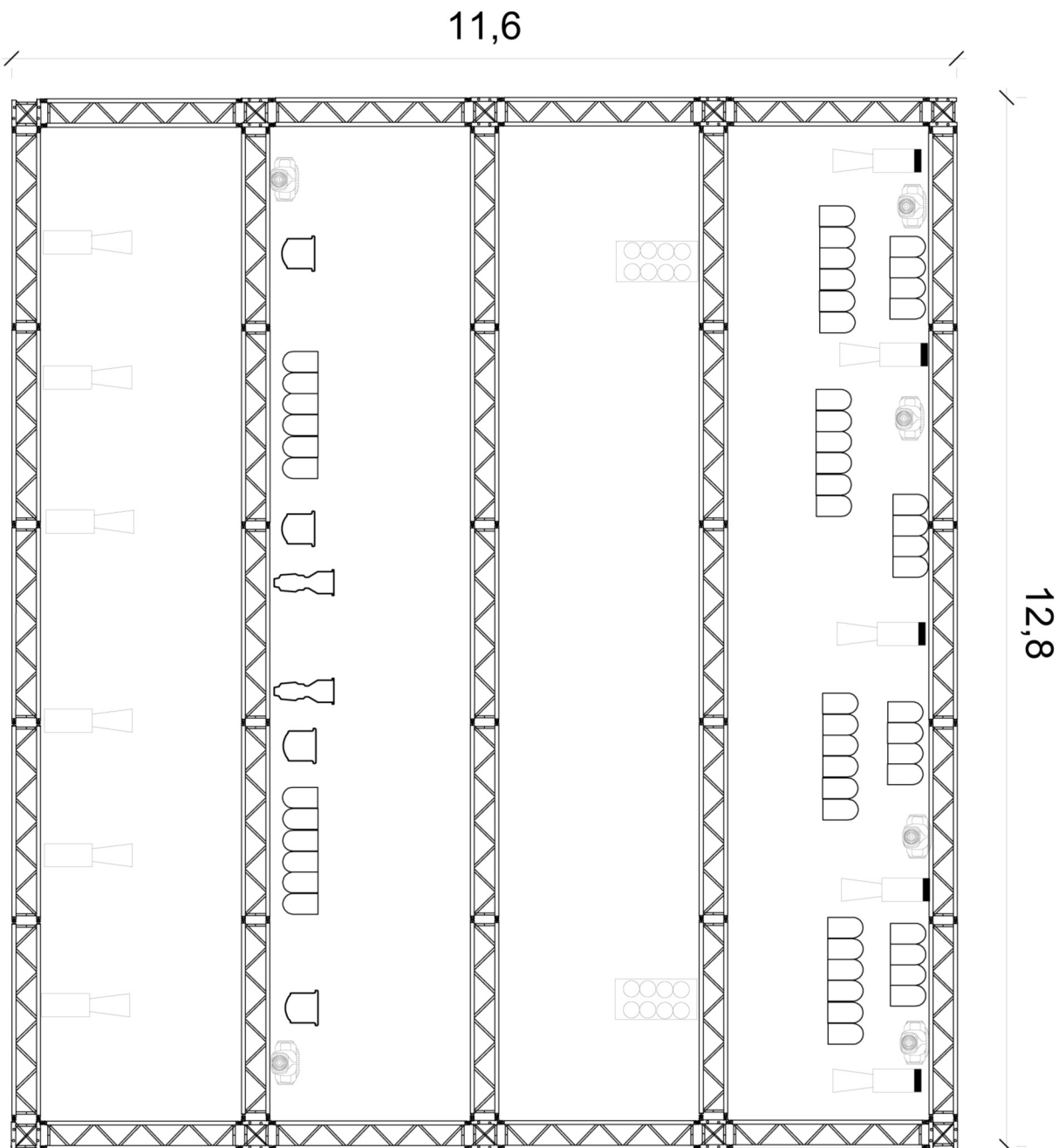
Rigging:
Slick
36 x 2,4 m
4 x 1,2 m
4 x 90° Corner
4 x 3-way Corner

Rigging points:
9 motors 1 t each (3 motors each catwalk/bridge)
max height 7 meters over ground

Video-Equipment:

| | | |
|---|---|----------------|
| 1 | ProjectionDesign F3 XGA Beamer mit EN13 1,3-1,7:1 Objektiv | 5000 Ansi |
| 1 | Projection Design F 82 HD Beamer | 10.000 Ansi |
| 1 | Stumpfl Screen | 6 m x 4,5 m |
| 1 | Stumpfl Screen | 4 m x 3 m |
| 1 | Stumpfl Screen | 2,10 m x 1,6 m |
| 1 | Operascreen | 14m x 7m |

Lighting Muffathalle 2011



4 x Mac 500



Par 64



ACL



Strand Profile 600



8 Light



PC 2 KW



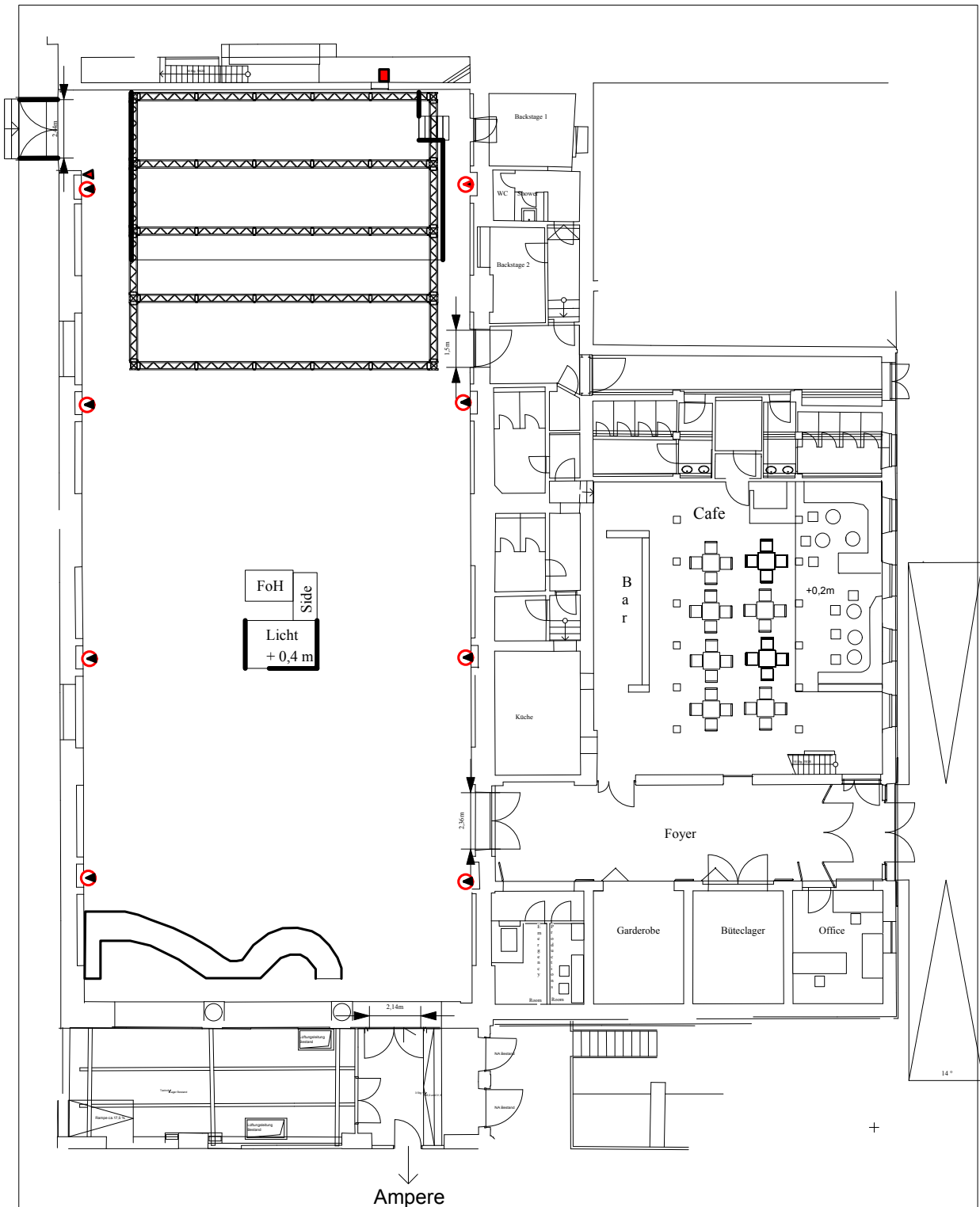
2 x Mac 600



2KW Profile

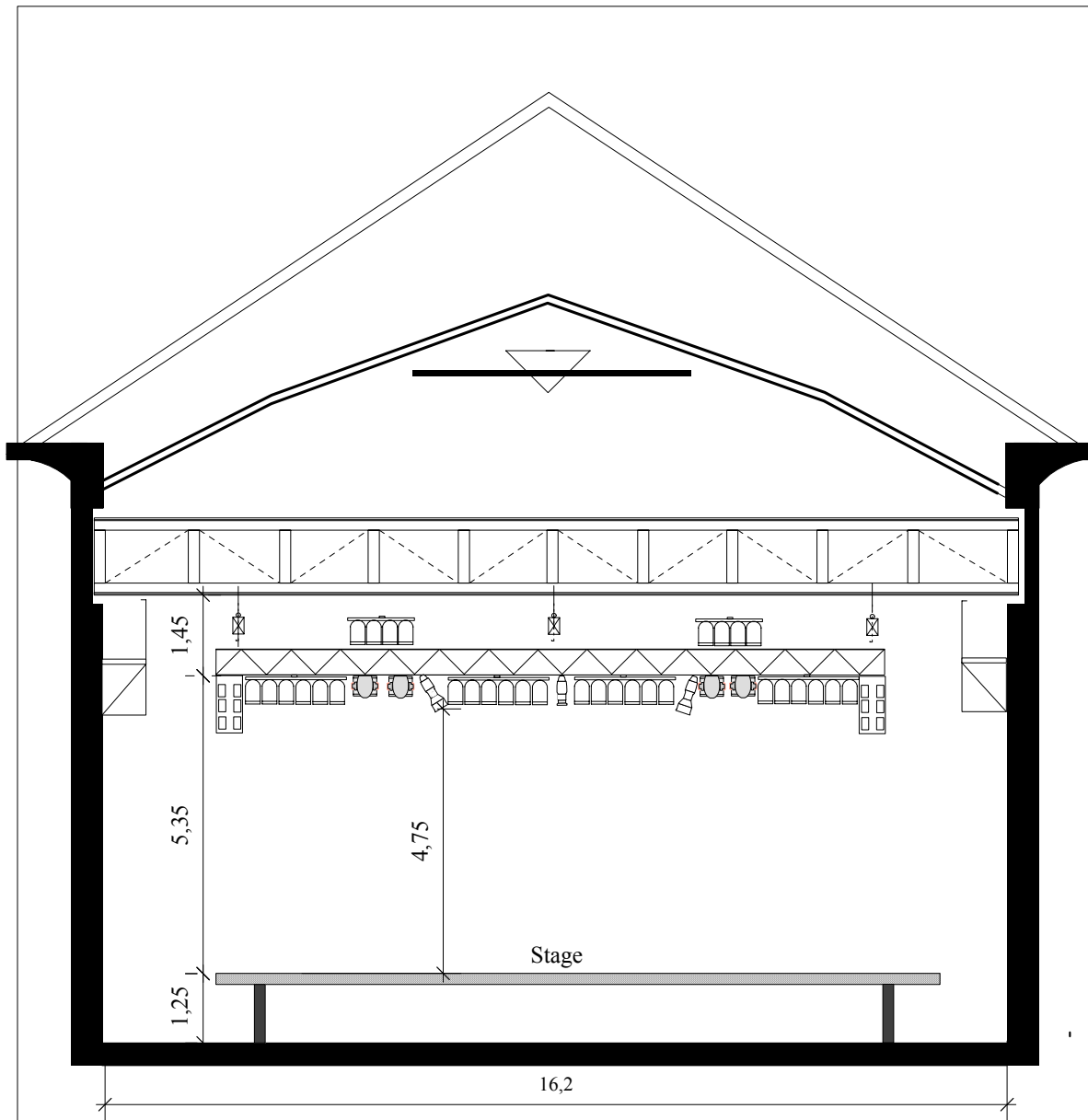
Console : Grand Ma full size

stage FoH Muffathalle



| | | |
|---|-------------|---|
| Town Address Munich MUFFATHALLE Zellstr.4 81667 Munich www.muffatwerk.de | Produktion: | ■ 3 x 63 A CEE ● 3 x 32 A CEE ▲ 3 x 125 A CEE DMX im Mauerversatz |
| | Date: | scale 1:200 |
| | | |
| | | |

Profile Muffathalle



| | | |
|---|----------------------|--------------------|
| Town Address Munich MUFFATHALLE Zellstr.4 81667 Munich www.muffatwerk.de | Stage: 7 x 13 x 1,25 | Profile |
| | Clearance: 5,35 | Scale 1:100 |
| | | Date: |